

Automatic programmable mortar mixers

EN 196-3 | EN 459-2 | EN 413-2 | EN 196-1 | EN ISO 679 | ASTM C305 | EN 480-1 | ASTM C451

MAIN FEATURES

- Complete with stainless steel mixing bowl, EN beater and open-type sand hopper
 - Machine operated by a dedicated and easy to use in-built software
 - Digital mixer, user friendly interface with functional alphanumeric display 2x16 characters and keyboard
 - The pre-defined procedures guide the operator in mixing operations according to Standards allowing manual introduction of sand by the top filling hopper
 - Continuously variable speed (VFD Variable frequency drive technology)
 - Either Standard or user defined speeds can be easily selected (also adjustable during mixing)
 - Blade/Planetary speeds adjustable from 30/13 to 380/165 rpm, depending on the mix consistency
 - Quick bowl mounting device
 - 3-points bowl supporting system allowing precise adjustment of the gap between bowl and beater
 - Possibility to create and recall user defined mixing procedures
 - Micro-switch preventing the machine to be started without bowl, and emergency stop button
 - Conforming to CE requirements
-

GENERAL DESCRIPTION

A robust device for the efficient mixing of cement mortars, this mixer is a table mounted unit with planetary mixing action and a bowl and beater that are easily fitted and removed. The front grill, when opened, automatically stops the machine for operator protection conforming to CE requirements.

The machine is supplied complete with stainless steel bowl, EN beater and open-type sand hopper

The machine operates with a dedicated and easy to use display and keyboard control. Either Standard speeds or user defined speeds can be easily selected (also adjustable during mixing). The in-built procedures automatically perform the mixing according to Standards, allowing manual introduction of sand by the top filling hopper during mixing.

The machine can be supplied, on request, complete with a second open-type hopper to add other products (e.g. admixtures or additives).

TECHNICAL SPECIFICATIONS

- Planetary speeds: 62 and 125 rpm or user defined
- Beater speed: 140 and 285 rpm or user defined
- Bowl capacity: 5 litres
- Alphanumeric display 2 x 16 characters
- Power: 370 W
- Overall dimensions: 465x540x620 mm (lxd x h)
- Weight: 35 kg (approx.)

ORDERING INFO

65-L0512

Automatic programmable mortar mixer, 5 l capacity complete with mixing bowl, EN beater and open-type sand hopper.
230 V, 50-60 Hz, 1 ph

65-L0514

Same as above but 110 V, 60 Hz, 1 ph

ACCESSORIES

Accessories

65-L0512/1

Second steel filling hopper

65-L0512/AS

Stainless steel beater conforming to ASTM C305

65-L0005/5

Hard rubber scraper

65-L0007/1

Reference sand, 32 bags, 1350 g each, total 43.2 kg

Spare parts

65-L0512/EN

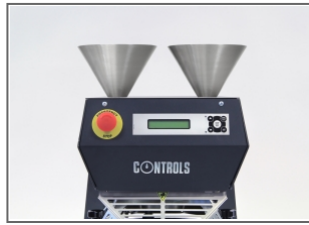
Stainless steel beater conforming to EN 196-1

65-L0512/2

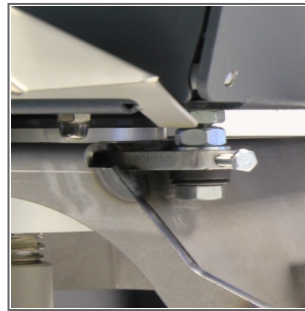
Stainless steel mixing bowl



Automatic programmable mortar mixer model 65-L0512 standard fitted with stainless steel bowl, EN beater and open-type sand hopper



Automatic programmable mortar mixer model 65-L0512 fitted with 2 open-type sand hoppers (one as accessory)



65-L0512 - Detail of the 3-points bowl supporting system allowing precise adjustment of the gap between bowl and beater



65-L0512 - Detail of the quick bowl mounting device



65-L0512 - Detail of the quick bowl mounting device



Stainless steel beater conforming to EN 196-1, model 65-L0512/EN



Stainless steel beater conforming to ASTM C305, model 65-L0512/AS

Array